



# CZ RuiHong Heavy Industry Machinery Co.ltd

## Company Overview

Add:JunAn road 8,Wujin,Changzhou China. web:[www.rhmillroll.com](http://www.rhmillroll.com) Email:[czrhzg@gmail.com](mailto:czrhzg@gmail.com)

# Directory

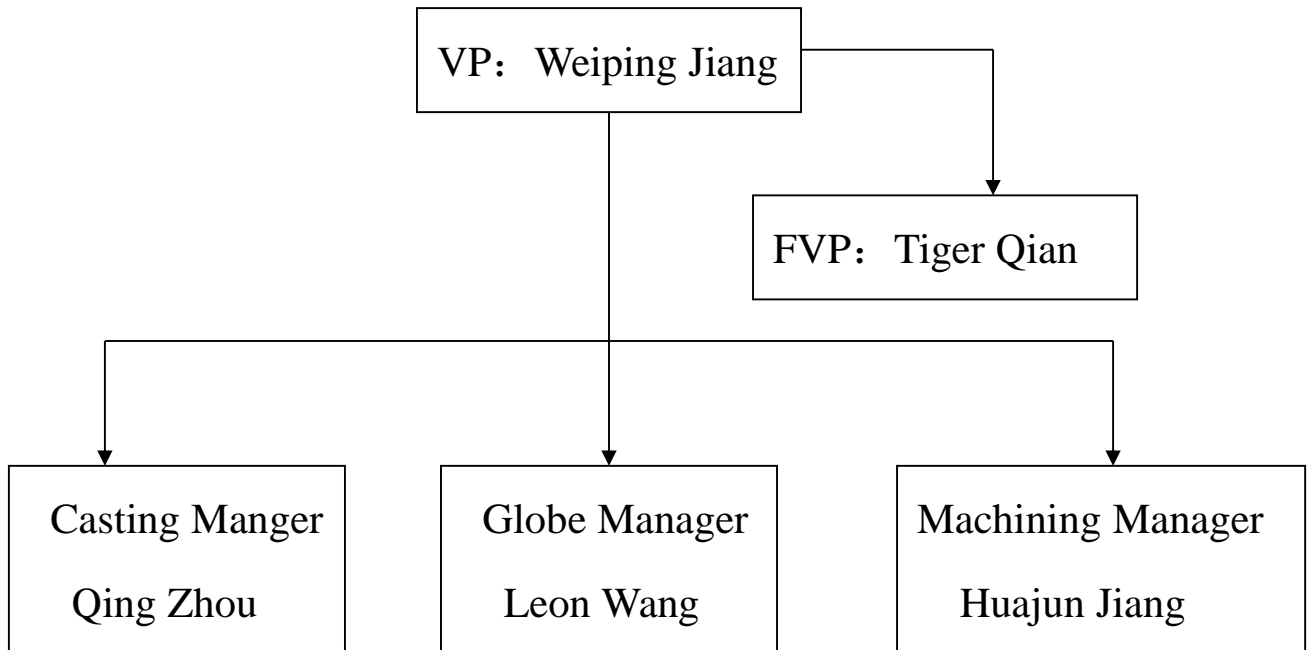
1. RH basic information
2. RH Core Team introduction
3. RH Product overview
4. RH Device detail
5. RH Quality inspection equipment
- 6、 RH Customer Overview
- 7、 RH Customer support Outline

With Certification Photos

## 1. RH basic information

Corporate	Weiping Jiang
Company Property	Private
Registered Capital	13 million RMB
Number of employees	150
Technical staff	20
Registered address	Jiangsu Changzhou . China
2010 Turnover	40 million RMB
2011 Turnover	45 million RMB
2012 Turnover	60 million RMB
2013 Turnover	63 million RMB
Business capacity:	1.2 billion RMB
Main Product:	Mill roll,cast roll,iron roll,steel roll, forged roll
Enterprise Mode:	Casting and machining
Trade:	Metallurgy Heavy Industry
Main customer1 :	Steel factory
Main customer2:	Roll mill factory
Main customer3	Other customer who need casting product

## 2 RH Core Team introduction



Name	Working background
Weiping Jiang	Make mill roll as a technology manager for 27 years , He is the China first group engaged in the working on mill roll.
Tiger Qian	Working on mill roll casting part for 20 years ,who makes 100 thousands mill roll
Qing Zhou	8 years experience in roll casting, metallurgical domestic senior university master's degree. Proficient understanding of all major casting technology experience.
Huajun Jiang	15-year veteran roll metalworking practitioners, is primarily responsible for processing European countries such as Germany Precision roller majority. Technique experienced a hard-working staff
Leon Wang	Undergraduate education, four years of Silicon Valley venture capital business work experience, 2 years roll practitioners. Understand the actual needs of industry issues and international foreign trade features.

#### 4、RH Product overview

Category	Name	Type	Performance	Use for
Cast iron	Chilled cast iron	CC	58-70 HSD ≥150 MPA	Merchant bar,
		CCI	60-70 HSD ≥150 MPA	wire rod, hot
		CCII	62-75 HSD ≥150 MPA	rolled sheet
		CCIII	65-80 HSD ≥350 MPA	Merchant bar,
		CCIV	70-85 HSD ≥350 MPA	wire rod, hot
		ICIII	65-78 HSD ≥350 MPA	rolled flat
		ICIV	70-83 HSD ≥350 MPA	sheet rolling
		ICV	77-85 HSD ≥350 MPA	mill, plate
	Ductile Iron	SGI	40-55 HSD ≥320 MPA	Square / board blooming mill, medium-sized steel, wire, narrowband
		SGII	50-70 HSD ≥320 MPA	
		SGIII	55-70 HSD ≥320 MPA	
		SGIV	55-70 HSD ≥320 MPA	
		SGV	60-70 HSD ≥320 MPA	
	Pearlite	SGPI	45-55 HSD ≥450 MPA	Fang, billet blooming mill, steel, wire, narrowband mill
		SGPII	55-65 HSD ≥450 MPA	
		SGPIII	62-72 HSD ≥450 MPA	
	Bainite	SGAI	55-78 HSD ≥350 MPA	Fang, billet blooming mill, steel, wire, narrowband mill
		SGAII	60-80HSD ≥350 MPA	
	New	GRF	80 ± 3 HSD ≥420 MPA	

Category	Name	Type	Performance	Use for
Cast Steel	Alloy Cast Steel	AS40	45-65HSD ≥650 MPA	Support rollers rolled strip, rough roll; slab steel
		AS50	60-70HSD ≥650 MPA	roughing; strip cold rolling and leveling roller
		AS60	35-50HSD ≥650 MPA	Steel, wire rod roughing mill; rail beams, steel
		AS60 I	35-45HSD ≥650 MPA	universal cogging mill; rolled strip breaking scale
		AS65	35-45HSD ≥650 MPA	roll, rough roll; plate rough roll; strip support
		AS65 I	35-45HSD ≥650 MPA	roller, vertical roll
		AS70	35-45HSD ≥650 MPA	Small and medium sized steel wire rod roughing
		AS70 I	35-45HSD ≥650 MPA	
		AS70 II	35-45HSD ≥680 MPA	
		AS75	35-50HSD ≥680 MPA	Small steel, wire rod roughing mill,
		AS75 I	35-50HSD ≥700 MPA	intermediate stands; seamless steel pipe
	Adamite	AD140	38-55HSD ≥590 MPA	Small and medium sized steel wire rod roughing,
		AD140 I	35-50HSD ≥590 MPA	intermediate stands; seamless roughing mill;
		AD160	40-50HSD ≥540 MPA	steel support rollers, vertical roll
		AD160 I	40-60HSD ≥540 MPA	Steel, wire rod roughing; sized steel, track beam, billet mill, steel universal mill; Hot Strip rough roller, support roller, vertical roll
		AD180	45-60HSD ≥500 MPA	
		AD190	55-65HSD ≥450 MPA	
		AD200	50-65HSD ≥450 MPA	
	Graphite	GS140	36-46HSD ≥540 MPA	Steel, wire rod mill; billet mills, steel universal mill; Hot Strip roughing mill, vertical roller
		GS150	40-50HSD ≥500 MPA	
		GS160	45-55HSD ≥480 MPA	

#### 4、 RH Device detail

##### Main Device Overview

Name	Type	Number
Lathe	CW6180	2
Lathe	61125	2
Lathe	C8450	2
Lathe	C8440	2
Lathe	CA6163	4
Grinder	MQ1350	2
Grinder	MQ1380	1
Vertical drilling	Z3050	1
Heat treatment furnace	RTZ-600-12	3
Centrifuge	J528	2
IF Furnace	KGP-DX-200KW/3T/300Hz	1
IF Furnace	KGP-DX-200KW/1T/300Hz	1
IF Furnace	KGP-DX-200KW/5T/300Hz	1
Grind sand	S11A	1
Planer	690	3
Drive	10T	1
Drive	5T	5

5、 RH Quality inspection equipment

Checking Device Overview

Name	Type	Number
Liquid Instrument		2
Fast spectrum analyzer		1
Flaw		1
Taper instrument		1
Metallographic analyzer		1
Thermometer		2
Rika room		1



## 6、RH Customer Overview

Number	Name	Use for
1	Shandong taifeng(China)	Supporting line finishing roll bar
2	Anhui jin'an(China)	Supporting line finishing roll bar
3	An hui langxi Changsheng (China)	Steel wire
4	Nantong laixin (To Bangladesh)	Line supporting the roll bar, steel mills in Bangladesh
5	Zhejiang Wanrong (China)	Narrow strip across the board supporting
6	Liaoning Dongsheng (To Korea)	Supporting the export of Korean rebar finishing
7	Huaian jixie Duanya(China)	Supporting line roll bar
8	Changzhou Penglong(China)	Supporting line roll bar
9	Changye Steel(China)	Supporting line roll bar
10	Anhui Zhonghang(China)	Supporting line roll bar
11	Xinjiang Sanchuan(China)	Steel wire
12	Xi An Changji(China)	Supporting bar across the board

13	WenAn xingang steel(China)	Narrowband line supporting
14	Han Dan Yuanbaoshan(China)	high-speed wire
15	He Bei Xinhua steel(China)	high-speed wire
16	Hangzhou steel(China)	Bar line supporting
17	Shanghai Tongmao(to Thaliand)	PSLPrograms to address the team rolled the only designated supplier
18	Shandong deqing(China)	Steel wire
19	Shandong Zibo Henshun(China)	Bar Line
20	Panzhijia Steel(China)	Bar Line
21	Nanjing steel(China)	Bar Line and Narrowband
22	FF HX steel(China)	Strip line
23	Hebei Renyi steel(China)	Steel wire
24	Jinan Huanghe steel(China)	Stick line supporting
25	Shanxi Huamao(China)	high-speed wire
26	Finebesteel (Korea)	Section bar

# Pledge

- 1、 To ensure delivery specified in the contract within the delivery;
- 2、 To ensure the products meet the national standards, user technical requirements or other requirements specified in the contract;
- 3、 Regular visits to customers, to understand the situation roll trial in order to improve and enhance;
- 4、 If the company is found in the course of product quality objection, after receiving written notice within 48 hours to reach the scene to assist in handling;
- 5、 Strict compliance with the "Contract Law" the relevant provisions.

# Certificate

Number: CNASC124Q13Q20146R1M

Registration Period: Feb 07, 2013 TO Jan 17, 2016

Issue date: Feb 07, 2013

Update date: N/A

Company name:

**Changzhou City Ruihong Roller  
Co., Ltd.**

Registered Site(s):

No.8, Jun'an Road, Dong'an Industrial Concentration  
Area, Huangli Town, Wujin District, Changzhou City,  
Jiangsu Province  
(213155)

For the Scope:

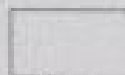
**Process of Cast Iron, Cast Steel, Forged Steel Rolls  
for Rolling and Hardware**

Have been formally assessed by Knowledge System Registration Co., Ltd. and found to  
comply with the requirements of

**GB/T 19001-2008/ ISO 9001:2008**  
**Quality management systems—Requirements**

陈尚德

Senior Executive of the CB



This certificate is invalid when surveillance audits are not performed to the Organization

Knowledge System Registration Co., Ltd.

19F, No 985, Dongfang RD, Pudong District,  
Shanghai, 200122

Phone: +86-21-68763181

Fax: +86-21-68670017

Web: [www.kn.com.cn](http://www.kn.com.cn)

